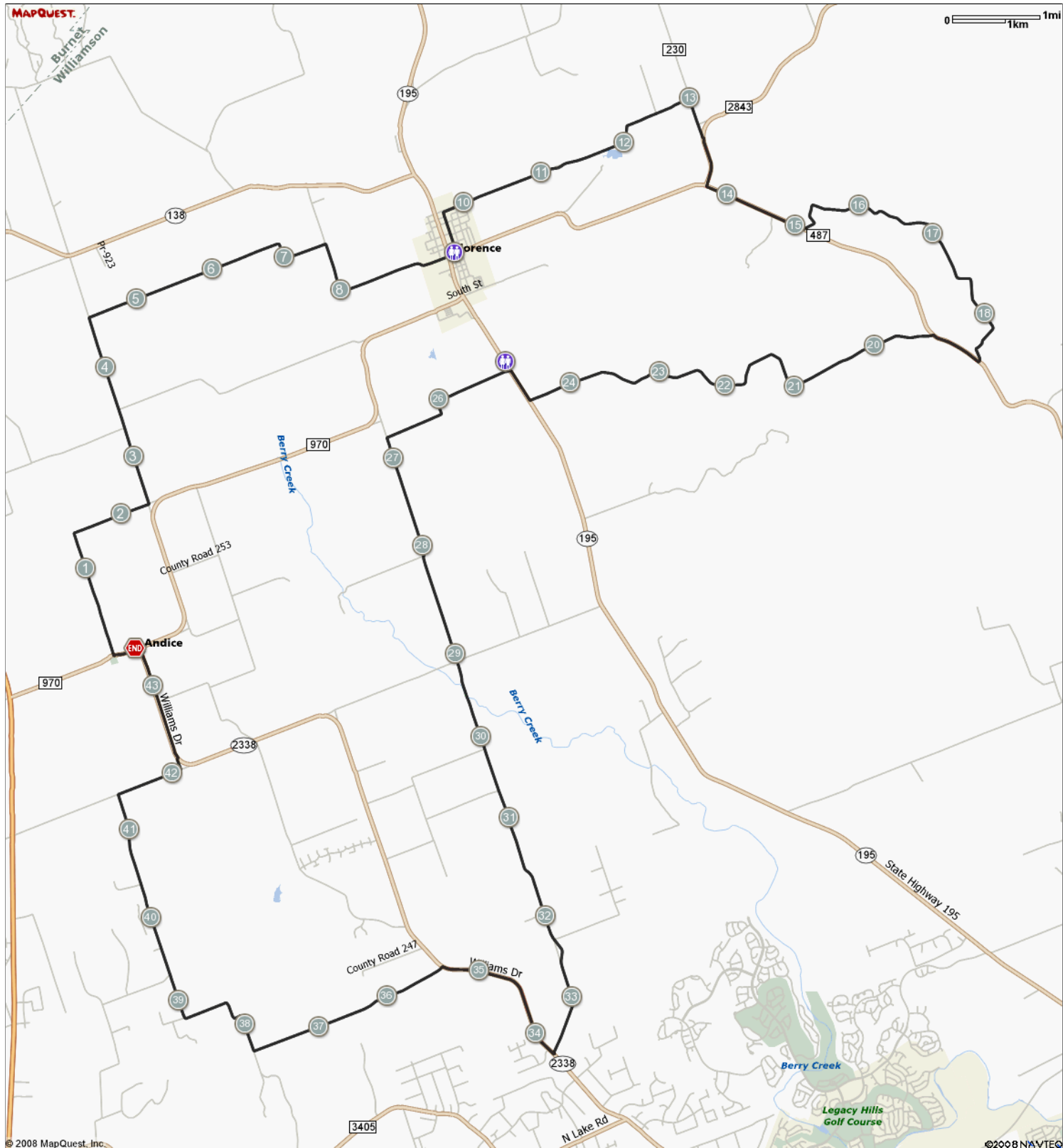


ROUTE DESCRIPTION:
No Description Provided



ROUTE DESCRIPTION:
 No Description Provided

Notes		
AT	FOR	NOTES
0.26 mi.		11,878 ft. Turn right at Highway 215
2.51 mi.		10,862 ft. Turn left at Highway 223
4.57 mi.		15,469 ft. Turn right at Highway 220
7.5 mi.		7,738 ft. Turn right at Highway 226
8.96 mi.		2,276 ft. Continue on W Main St
9.39 mi.		70 ft. Bathroom
9.41 mi.		2,446 ft. Turn left at College Ave
9.87 mi.		1,558 ft. Turn right at E Tomlinson St
10.17 mi.		14,968 ft. Continue on Highway 229
13 mi.		2,359 ft. Turn right at Highway 230
13.45 mi.		2,761 ft. Highway 230 turns slightly right and becomes 2843/3189
13.97 mi.		6,184 ft. Turn left at 487
15.14 mi.		19,027 ft. Slight left at Highway 232
18.75 mi.		3,129 ft. Turn right at 487

Notes		
AT	FOR	NOTES
19.34 mi.		27,675 ft. Turn left at Highway 233
24.58 mi.		2,498 ft. Turn right at TX-195
25.05 mi.		463 ft. Bathroom
25.14 mi.		8,965 ft. Turn right at Highway 244
26.84 mi.		36,400 ft. Turn left at Highway 245
33.73 mi.		9,170 ft. Turn right at Ranch Road 2338
35.47 mi.		12,244 ft. Turn left at Indian Springs Rd
37.79 mi.		8,690 ft. Turn right at Highway 289
39.43 mi.		10,424 ft. Slight right at Highway 255
41.41 mi.		3,982 ft. Turn right at Highway 254
42.16 mi.		726 ft. Turn left toward Ranch Road 2338
42.3 mi.		6,424 ft. Turn left at Ranch Road 2338
43.52 mi.		232 ft. Turn left at 970
43.56 mi.		- Stop